



C E N S U S • R E C E N S E M E N T

2016 Census Dissemination

Release Strategy and Products & Services Line

ACCOLEDS / DLI Western Training

University of Victoria, B.C.

November 29, 2016



Statistics
Canada

Statistique
Canada

Canada



CENSUS • RECENSEMENT

Overview

- ☐ 2016 Census collection experience and response rates
- ☐ 2016 Census release strategy
- ☐ Overview of the 2016 Census products and services line
- ☐ Data quality indicators
- ☐ Census of Agriculture
- ☐ Post day-of-release plans



Very successful collection operations ...

- ❑ With the return of the mandatory long-form census – the collection operations were the most successful on record
- ❑ Building on the wave methodology fully implemented in 2011, Internet response exceeded planning assumptions (68.3%) as did self-response (88.8%)
- ❑ Excellent response rates for all provinces and territories (both short and long forms), as well as for most communities
- ❑ Linking income tax to short-form respondents is expected to produce high-quality income information
- ❑ Integrated communications strategy, designed as a social marketing campaign, was effective and very efficient
 - Use of behavioural economics and segmentation tailored to reach hard to enumerate populations

Some work remains ...

- ❑ Fort McMurray situation was mitigated with innovative solutions
 - Research work on the integration of administrative data to reproduce the census head count served as the starting point
 - Validated by administrative data obtained from Alberta
 - Collection of long-form data conducted in August

- ❑ Situation for First Nations communities
 - Participation of on-reserve communities was excellent
 - Should be able to release results for vast majority of participating reserves

What does this mean for users?

- ☐ Quality of the data will be high
 - Significant decrease in item non-response for both short and long forms
- ☐ Will allow better interpretation of 2011 Census
- ☐ High-quality census data at all levels of geography improve the survey frame for the social survey program
 - Improved record linkage opportunities to meet growing demands for data



CENSUS • RECENSEMENT

Collection response rates

2016 Census of Population collection response rates

Collection response rates, 2016 Census of Population ¹

Geography	Overall response ²	Internet ³	Self-response ⁴	Long form ⁵
Canada	98.4%	68.3%	88.8%	97.8%
Newfoundland and Labrador	98.6%	45.1%	88.0%	98.1%
Prince Edward Island	98.2%	44.9%	89.6%	97.8%
Nova Scotia	98.4%	55.8%	89.6%	98.1%
New Brunswick	98.3%	65.4%	89.7%	97.9%
Quebec	98.7%	70.5%	89.4%	98.3%
Ontario	98.6%	70.9%	90.0%	98.1%
Manitoba	98.2%	61.1%	88.9%	97.2%
Saskatchewan	98.1%	54.2%	88.6%	97.7%
Alberta ⁶	97.9%	65.3%	83.3%	97.2%
British Columbia	97.8%	71.2%	88.1%	97.2%
Yukon	96.6%	56.8%	79.0%	94.7%
Northwest Territories	96.6%	39.5%	87.2%	96.5%
Nunavut	95.2%	... ⁷	... ⁷	95.2%

Notes:

- ¹ These preliminary rates are obtained directly from collection results (as of August 4, 2016), i.e., before data processing and data quality verification. They are calculated as the number of private dwellings for which a questionnaire was returned, divided by the number of private dwellings classified as occupied by census enumerators.
- ² Overall response refers to the completion of a census questionnaire with or without assistance from a Statistics Canada representative.
- ³ Internet refers to the completion of a census questionnaire via Internet by the respondent. It excludes dwellings in canvasser enumeration areas and Indian reserves.
- ⁴ Self-response refers to the completion of a census questionnaire without assistance from a Statistics Canada representative. It excludes dwellings in canvasser enumeration areas and Indian reserves.
- ⁵ Long form refers to the overall response for the subset of private dwellings from which households were asked to complete a census long form.
- ⁶ The rates for Alberta exclude the municipality of Wood Buffalo.
- ⁷ Canvasser enumeration was the only method used to enumerate Nunavut.

Symbol:

... not applicable



Statistics
Canada

Statistique
Canada

Canada

Release strategy

- ☐ All major releases take place in calendar year 2017
- ☐ Additional product/levels of geography releases to follow
- ☐ Continuous releases of additional analysis planned until 2019
- ☐ Products and services line is very similar to 2011 however, modernizing some products – ‘Preview-type’ content to be released soon
- ☐ Greater use of social media and data visualization
- ☐ METADATA - review and standardization of variables, subsets, definitions, and classifications for consistency across Statistics Canada, internationally



2016

C E N S U S • R E C E N S E M E N T

Release dates, 2016 Census geography products

Release date	Census geography products
November 16, 2016	<ul style="list-style-type: none">• Spatial information products<ul style="list-style-type: none">◦ Boundary files, first edition◦ Road network files◦ Hydrography files• Reference maps, first edition• Attribute information products (correspondence files)• Reference guides and documents, first edition
February 8, 2017	<ul style="list-style-type: none">• Spatial information products<ul style="list-style-type: none">◦ Boundary files, second edition• Reference maps, second edition• Attribute information products (GeoSuite, Geographic Attribute File)• Reference guides and documents, second edition

Release dates, 2016 Census Program

Release date	Release topic
February 8, 2017	Population and dwelling counts
May 3, 2017	Age and sex Type of dwelling
May 10, 2017	Census of Agriculture
August 2, 2017	Families, households and marital status Language
September 13, 2017	Income
October 25, 2017	Immigration and ethnocultural diversity Housing Aboriginal peoples
November 29, 2017	Education Labour Journey to work Language of work Mobility and migration



CENSUS • RECENSEMENT

2016 Census Products and Services Line

Day of release products



The Daily article



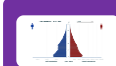
Census in Brief articles



Infographics



Social media (e.g., Twitter, Facebook, YouTube, Videos, Chat)



Age pyramids



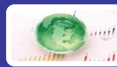
Statistics Canada Data Viewer (SCDV)



Focus on Geography Series (FoGS)



Census Profile



Aggregate Dissemination Area (ADA) Profile



Highlight tables



Data tables



Census Dictionary



Reference guides



Guide to the Census of Population



Geography products



Custom products & services

Post-release products



Insights on Canadian Society (ICS) articles



Additional Data tables



Aboriginal Population Profile



Portrait of OL Communities in Canada



RDC files & PUMFs



Technical reports

2086 0.862918 1111
2084 0.864186 1112
17785 0.864512 111
514522 0.86327 11
520314 0.863456 11
0.864785

Census Datasets



Statistics
Canada Statistique
Canada

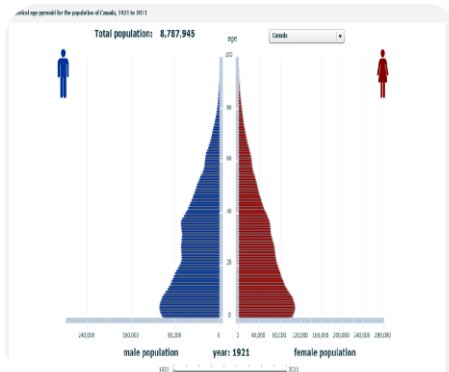
Canada

Geography Products and Services

- ❑ **November 16, 2016 – Release of census geography products in advance of population and dwellings (P&D):**
 - Census Dictionary – geography component (i.e., definitions, supporting tables & figures)
 - New Aggregate Dissemination Area (ADA) information, reference maps, boundary file
 - Spatial information products: boundary files, road network files, hydrography
 - Reference maps (Standard Geographical Classification reference maps)
 - Attribute information products: correspondence files
 - Reference documents: interim list of boundary changes
 - Reference guides
- ❑ **February 8, 2017 – with release of P&D:**
 - Updated Spatial information products: boundary files, road network files, hydrography
 - Reference maps
 - Attribute information products: correspondence files
 - GeoSearch
 - GeoSuite Web and DVD

Day of release - Analytical Products

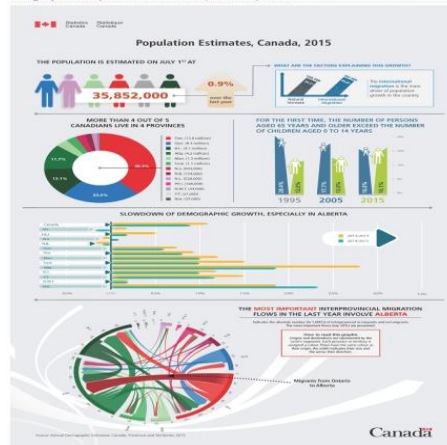
- ❑ *The Daily* article, Census in Briefs, Infographics, Age pyramids, Thematic maps, Indicators, Social media (Twitter, Facebook, YouTube videos, Chat)



Age pyramids

- ❑ Historical age structure (CAN, PROV-TERR), 1851-2016
- ❑ Compare age structure for 2 geographies (CAN, PROV-TERR, CMA/CA), 2011-2016

Infographic: Population estimates, Canada, 2015



Infographics

- ❑ Complement 2016 Census releases by presenting analytical highlights via graphic representations
- ❑ Combine data and related information to provide quick way to make ideas easy to interpret by telling a visual story

Day of release - Data Products

❑ Census Profile

- Combined short/long form, univariate profile per GEO that builds throughout releases
- Can compare GEOs, exploring adding percentages along with counts
- Down to DA on DoFR and will include new Aggregate Dissemination Area (ADA) level of GEO
- **ADA Profile** – Oct. 25, 2017 release (first long form), same content but presents standard error
- Download .csv, .tab, .ivt

❑ Highlight tables

- Back for **all** 2016 releases, support analysis, present key indicators - % change, ranking/sorting
- All CSDs (new) - used to be CSD 5,000+
- Download .csv and .tab

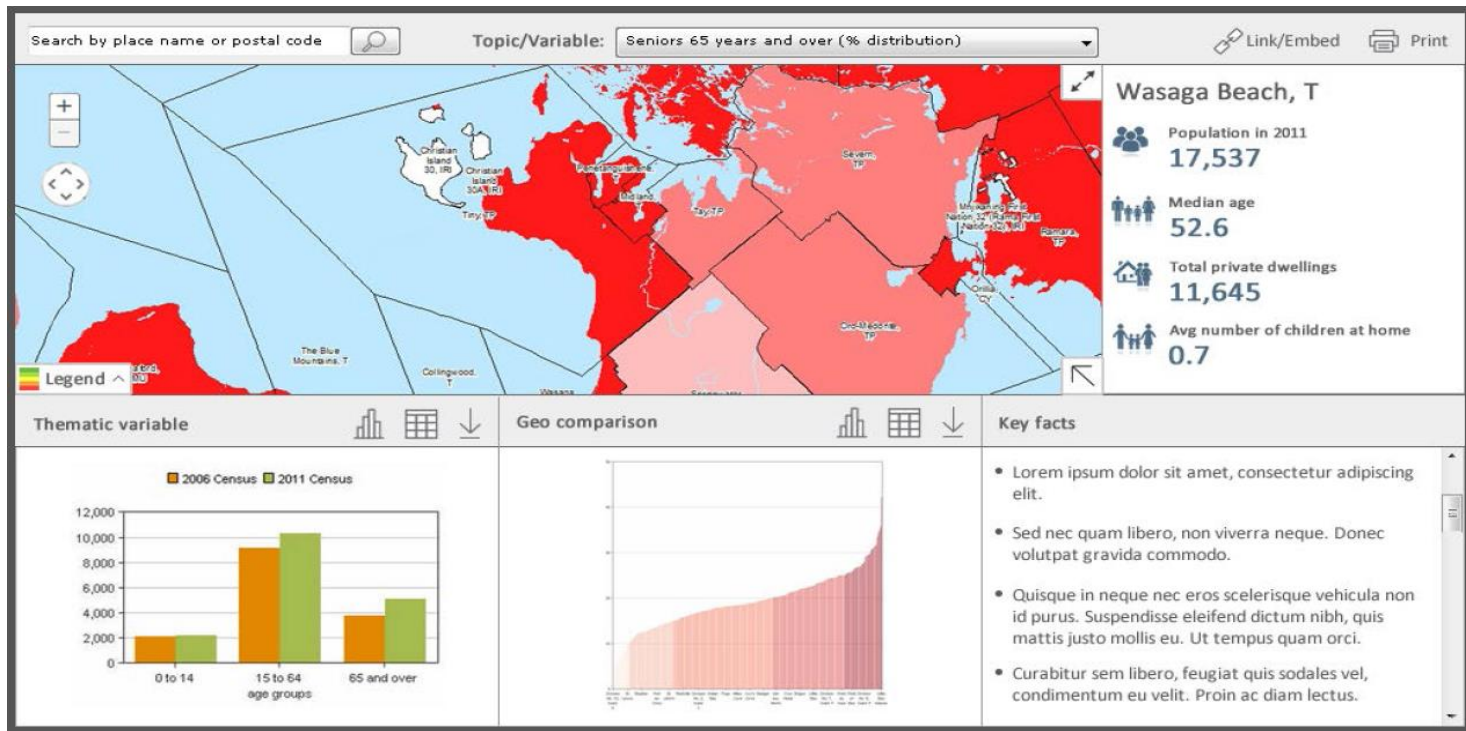
❑ Focus on Geography Series (FoGS)

- Similar to 2011, merged in content from Visual Census, organized by topic
- Improved/modernized graphics
- Can/Prov/Terr, CMA/CA, CSD (All CSDs - new)
- Investigating customizable comparison geography

❑ Data tables

- Traditional cross tabulations that begin with Age and sex
- New - down to DA for Age and sex (May 3, 2017) – others TBD
- Remaining releases to CSD on DoFR, lower level GEOs and additional tables to follow
- Download .csv, .tab, .ivt

'Statistics Canada Data Viewer'



- Statistical dashboard - map, pre-defined charts, images, graphics, highlight text and supporting HTML
- Select from an extensive list of census indicators/geographic units and results displayed
- Some interactive capabilities to select and/or adjust some elements of the dashboard



C E N S U S • R E C E N S E M E N T

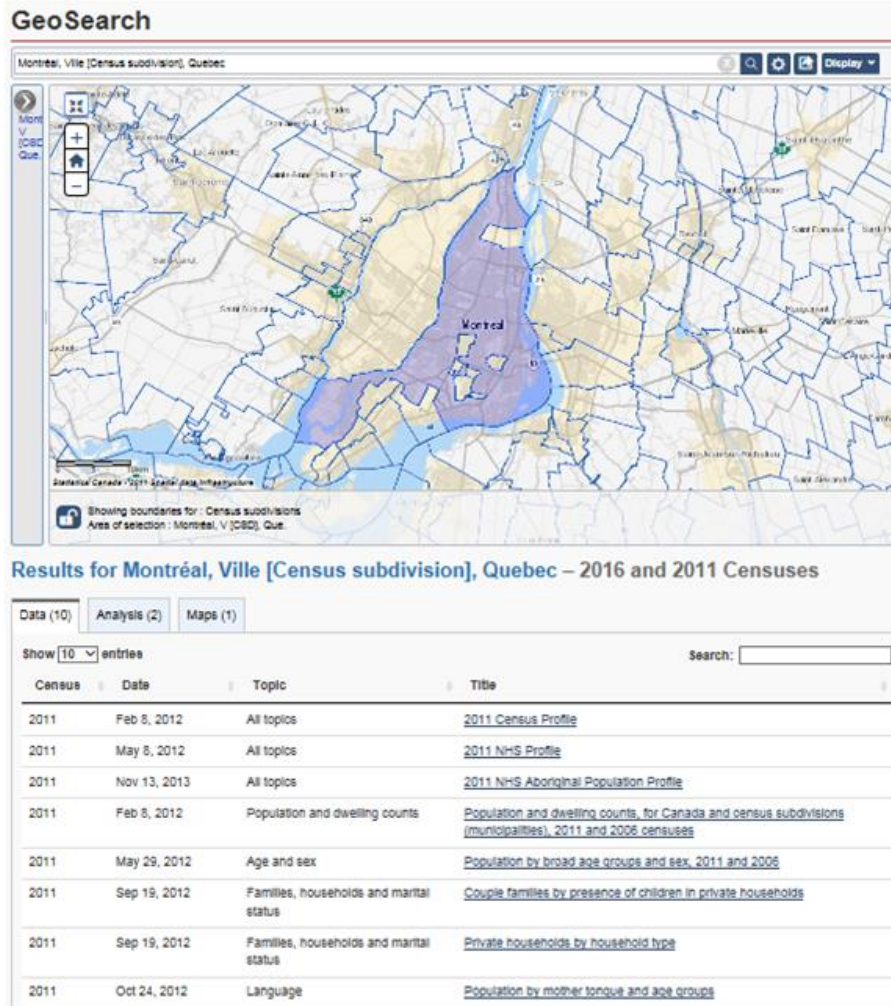
Day of release - Reference Products

- ☐ *Guide to the Census of Population, 2016* (Census Overview content, short/long form user guide, released iteratively starting with P&D)
- ☐ Census Dictionary (moving towards using established standards for all metadata)
- ☐ Reference guides



GeoSearch

- ☐ To be launched with P&D Counts release (Feb. 8, 2017)
- ☐ Default will find 2016 and 2011 results except for areas with geographic boundary changes. If these exist – default is to present 2016 information only
- ☐ Possibility to isolate geographic vintage 2016 or 2011 (one or the other)
- ☐ Results for data, analysis and maps





CENSUS • RECENSEMENT

Statistics Canada
Statistique Canada

Geosuite

What's new Useful Links

Search Geography by name or code

Date vintage : 2016

Canada, (D1), CAN

Search result for :Canada, CAN (D1)

2016 Census
Level: Canada
Population: 35,708,682
Private Dwellings: 12,669,620
Occupied Dwellings: 10,205,716
Land Area (Km²): 9,984,671.0000

Geographic Level: No Data Available

2011 Census
Level: Canada
2011 Pop. on 2016 border: 34,915,887

Hierarchy of standard geographic area for dissemination,
2016 Census

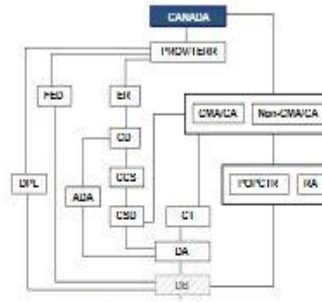
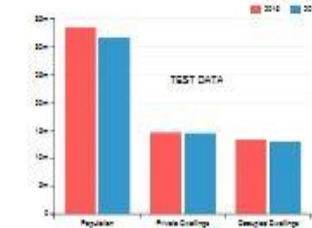


Chart result for :Canada, CAN (D1)



Map result for :Canada, CAN (D1)



Date modified:
2016-04-15

GeoSuite Web

- ❑ Online version of GeoSuite
- ❑ Downloadable version will remain
- ❑ To be launched with P&D counts release (February 8, 2017)



Statistics Canada
Statistique Canada

Canada



CENSUS • RECENSEMENT

Census Datasets

Filter Datasets

Change survey

2011 Census of Population ▾

Submit

Topic

Age and sex

Families, households and marital status

Language

Structural type of dwelling and collectives

Geography

Census Division

Census Metropolitan Area / Census

Agglomeration

Census Subdivision

Census Tract

Designated Place

Dissemination Area

Economic Region

Federal Electoral District

Federal Electoral District (2013 Representation
order)

Forward Sortation Area

Population Centre

Province / Territory

Variable

Age (131)

Age group of child (12)

Age group of child (13)

Age group of child (2)

Age group of child (5)

Age groups (13)

Age groups (13A)

Age groups (17)

Age groups (17A)

Age groups (21)

Age groups (25)

2011 Census of Population

Showing 1 to 10 of 122 entries

Sort by – table title



Sort

1. Age (131) and Sex (3) for the Population of Canada and Forward Sortation Areas, 2011 Census
Catalogue number: 98-311-XCB2011022
Release date: February 5, 2013
Formats: [HTML](#) [Beyond 20/20](#) [SDMX](#) [XML](#)
2. Age (131) and Sex (3) for the Population of Canada, Provinces, Territories and Economic Regions, 2011 Census
Catalogue number: 98-311-XCB2011024
Release date: May 29, 2012
Formats: [HTML](#) [Beyond 20/20](#) [SDMX](#) [XML](#)
3. Age (131) and Sex (3) for the Population of Canada, Provinces, Territories and Federal Electoral Districts (2003 Representation Order), 2011 Census
Catalogue number: 98-311-XCB2011020
Release date: May 29, 2012
Formats: [HTML](#) [Beyond 20/20](#) [SDMX](#) [XML](#)
4. Age (131) and Sex (3) for the Population of Canada, Provinces, Territories and Federal Electoral Districts (2013 Representation Order), 2011 Census
Catalogue number: 98-311-XCB2011028
Release date: May 21, 2014
Formats: [HTML](#) [Beyond 20/20](#) [SDMX](#) [XML](#)
5. Age (131) and Sex (3) for the Population of Canada, Provinces, Territories, Census Divisions and Census Subdivisions, 2011 Census
Catalogue number: 98-311-XCB2011023
Release date: May 29, 2012
Formats: [HTML](#) [Beyond 20/20](#) [SDMX](#) [XML](#)
6. Age (131) and Sex (3) for the Population of Canada, Provinces, Territories, Census Divisions, Census Subdivisions and Dissemination Areas, 2011 Census
Catalogue number: 98-311-XCB2011018
Release date: May 29, 2012
Formats: [HTML](#) [Beyond 20/20](#) [SDMX](#) [XML](#)
7. Age (131) and Sex (3) for the Population of Canada, Provinces, Territories, Census Metropolitan Areas and Census Agglomerations, 2006 and 2011 Censuses
Catalogue number: 98-311-XCB2011021
Release date: May 29, 2012
Formats: [HTML](#) [Beyond 20/20](#) [SDMX](#) [XML](#)

Census Datasets



Will be updated with 2016 information starting with Age and sex release



Statistics
Canada

Statistique
Canada

Canada

Data quality indicators

Aiming to ...

- Produce and publish data quality indicators for select variables from the long form at the Canada, province/territory level, potentially select CSDs as well (as per 2011)
 - Produce and publish global non-response rate (GNR) values for short form (new) and long form (as per 2011 NHS). Integrated into products for all levels of geography.
-
- ☐ Exploring how to best present data quality indicators and flagging – will use standards
 - ☐ Suppression thresholds for DQ and confidentiality being established
 - ☐ Suppression lists will be maintained

Proposed data quality indicators – previous census counts

Geographic name	Type ¹	Prov. / Terr.	Population			Private dwellings, 20XX		Land area in square kilometres, 20XX	Population density per square kilometre, 20XX	CSD population rank, 20XX	
			20XX	20XX	% change	Total	Occupied by usual residents			National	Prov. / Terr.
Canada ²			33,476,688	31,612,897	5.9	14,569,633	13,320,614	8,965,121.42	3.7		
Twillingate	T	N.L.	2,269	2,448	-7.3	1,190	985	25.74	88.2	1,226	36
Rankin Inlet ³	HAM	Nvt.	2,266	2,660 R	-15.1	708	626	20.24	112.0	1,227	3

Note:

- ¹ Census subdivisions (CSDs) are classified into 54 types according to official designations adopted by provincial/territorial or federal authorities. Two exceptions are 'subdivision of unorganized' (SNO) in Newfoundland and Labrador, and 'subdivision of county municipality' (SC) in Nova Scotia, which are geographic areas created as equivalents for municipalities by Statistics Canada, in cooperation with those provinces, for the purpose of disseminating statistical data.
- ² Excludes census data for one or more incompletely enumerated Indian reserves or Indian settlements
- ³ This geographic area underwent a formal review in 20XX; the 20XX count have been adjusted due to overcoverage or undercoverage. The count presented in this table may not match the original counts published in 20XX for this area.
- ⁴ This geographic area underwent a formal review in 20XX; the 20XX count have been adjusted due to boundary and/or population and/or dwelling change(s). The count presented in this table may not match the original counts published in 20XX for this area.
- ⁵ Use the 20XX count with caution. This geographic area underwent a formal review in 20XX and a 'should read' count was published. As a result of the review, and possible subsequent changes, the 20XX count presented are the best available.
- ⁶ 20XX adjusted count due to updates received.
- ⁷ The 20XX Census was not completed during the 20XX collection period for this area. A [special collection](#) which contains 20XX estimates for population and dwellings was completed later in 20XX (October).

Symbols:

- R Revised. The 20XX count for this area has been revised and may not match the original count published in 20XX.
- E Use with caution

Data quality indicators

Characteristic	Rankin Inlet, HAM Nunavut [Census subdivision]			Keewatin, REG Nunavut [Census division]		
	Data quality Map			Data quality Map		
	Change geography			Change geography		
	Total	Male	Female	Total	Male	Female
Population and dwelling counts						
Population in 20xx 1	2,266 ^E	8,955
Population in 20xx 1	2,358	8,348
20xx to 20xx population change (%)	-3.9 ^E	7.3
Total private dwellings 2	708	2,550
Private dwellings occupied by usual residents 3	626	2,234
Population density per square kilometre	112.0	0.0
Land area (square km)	20.24	444,621.10

Data quality indicators

Characteristic	Rankin Inlet, HAM Nunavut [Census subdivision]			Keewatin, REG Nunavut [Census division]		
	Data quality Map			Data quality Map		
	Change geography			Change geography		
	Total	Male	Female	Total	Male	Female
Population and dwelling counts						
Population in 20XX 1	2 266	8,955
Population in 20XX 1	8,348
20XX to 20XX population	7.3
Total private dwellings	2,550
Private dwellings occup	2,234
Population density per s	0.0
Land area (square km)	444,621.10

Data quality: Rankin Inlet, HAM [Census subdivision], Nunavut

- Global non-response rate (GNR), short census questionnaire: XX.X %
- Global non-response rate (GNR), long census questionnaire: XX.X %
- This geographic area underwent a formal review in 20XX; the 20XX population count has been adjusted due to overcoverage or undercoverage. The count presented in this table may not match the original counts published in 20XX for this area.

Data quality indicators

Characteristic	Rankin Inlet, HAM Nunavut [Census subdivision]			Keewatin, REG Nunavut [Census division]		
	Total	Male	Female	Total	Male	Female
Population and dwelling counts						
Population in 20XX <small>1</small>	2 266	8,955
Population in 20XX <small>1</small>	8,348
20XX to 20XX population	7.3
Total private dwellings	2,550
Private dwellings occup	2,234
Population density per s	0.0
Land area (square km)	444,621.10

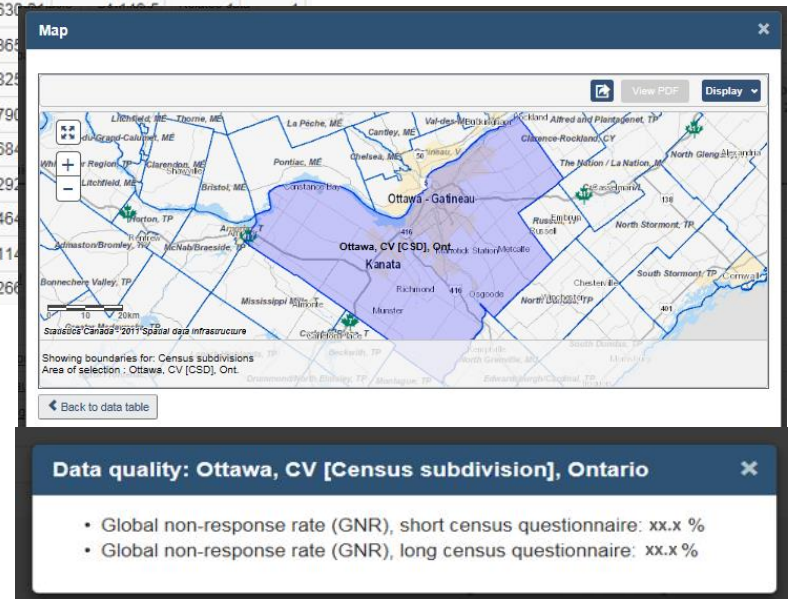
Data quality: Rankin Inlet, HAM [Census subdivision], Nunavut

- Global non-response rate (GNR), short census questionnaire: XX.X %
- Global non-response rate (GNR), long census questionnaire: XX.X %
- This geographic area underwent a formal review in 20XX; the 20XX population count has been adjusted due to overcoverage or undercoverage. The count presented in this table may not match the original counts published in 20XX for this area.

Data quality indicators – Highlight tables

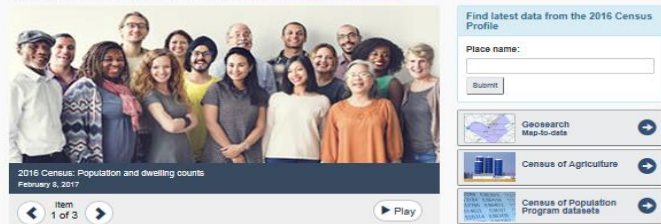
Geographic name	Type ¹	Prov. / Terr.	Population			Private dwellings, 20XX		Land area in square kilometres, 20XX	Population density per square kilometre, 20XX	CSD population rank, 20XX	
			20XX	20XX	% change	Total	Occupied by usual residents			National	Prov. / Terr.
Canada ²			33,476,688	31,612,897	5.9	14,569,633	13,320,614	8,965,121.42	3.7		
Toronto ³	C	Ont.	2,615,060	2,503,281 R	4.5	1,107,851	1,047,877	630.3	1,116.5		
Montréal	V	Que.	1,649,519	1,620,693	1.8	813,819	759,946	365.8	1,116.5		
Calgary ²	CY	Alta.	1,096,833	988,812 R	10.9	445,848	423,417	825.7	1,116.5		
Ottawa	CV	Ont.	883,391	812,129	8.8	370,217	353,244	2,790.1	1,116.5		
Edmonton	CY	Alta.	812,201	730,372	11.2	348,672	324,756	684.3	1,116.5		
Mississauga ²	CY	Ont.	713,443	668,599 R	6.7	242,538	234,582	292.2	1,116.5		
Winnipeg	CY	Man.	663,617	633,451	4.8	280,489	268,753	464.3	1,116.5		
Vancouver	CY	B.C.	603,502	578,041	4.4	286,742	264,573	114.0	1,116.5		
Brampton	CY	Ont.	523,911	433,806	20.8	154,663	149,271	266.0	1,116.5		

Select a geographic name – map provide with data quality information



Census Program

The Census Program provides a statistical portrait of the country every five years. The 2016 Census Program includes the Census of Population and the Census of Agriculture. For upcoming release dates, refer to the [2016 Census Program release schedule](#).



Find latest data from the 2016 Census Profile

Place name:

Submit

Geosearch Map-to-data

Census of Agriculture

Census of Population Program datasets

2016 Census: Population and dwelling counts February 8, 2017

Item 1 of 3

Play

Key statistics: Canada



Topics

The Census of Population Program offers a wide range of analysis, data, reference and geographical information according to topics (subjects) that paint a portrait of Canada and its population. To access topics from the previous Census, refer to [2011 Census topics](#).

Release dates, 2016 Census Program

February 8, 2017	Population and dwelling counts
May 3, 2017	Age and sex, Type of dwelling
August 2, 2017	Families, households and marital status, Language
September 13, 2017	Income
October 25, 2017	Immigration and ethnocultural diversity, Housing, Aboriginal peoples
November 29, 2017	Education, Labour, Journey to work, Language of work, Mobility and migration

Information and services

The Census of Population Program information holdings include data, analytical, reference and geography products. Videos present highlights and provide an overview of our major releases. Custom services are available for more complex information requests.

Data products

Statistical information including tabulations, profiles, microdata and data visualizations.

Analytical products

An analytical perspective on Census of Population Program topics.

Reference materials

Supporting documentation to assist users with understanding and interpreting Census of Population Program information.

Geography

Geographical information that will assist with interpreting Census of Population Program information.

Video centre

A collection of videos providing insight and highlights from the major releases.

Census consultation

Data users and interested parties across Canada are asked for their views on the type and extent of information they believe should be available from the census.

Previous censuses

- [2011 Census of Population](#)
- [ARCHIVED - 2006 Census of Population](#)
- [ARCHIVED - 2001 Census of Population](#)
- [ARCHIVED - 1996 Census of Population](#)

Future censuses

- [Census Program Transformation](#)

Related links

- [Custom services](#)
- [Accessing my Census information](#)
- [Census Program corrections and updates](#)

Web module progression – February 8, 2017

- ❑ Add to spotlight – link to Population and Dwelling Counts topic page
- ❑ Update key statistics with 2016 indicators
- ❑ Switch topic list to 2016 topic list format by sequential release
- ❑ Data, Analytical and Reference Product links point to new 2016 landing pages



CENSUS • RECENSEMENT

A G R I C U L T U R E

Product	Description	Release date
Data products	1. Farm and farm operator Data	May 10, 2017
	2. Selected Historical Farm and Operator Data from the Census of Agriculture	Dec 13, 2017
	3. Census of Agriculture and Tax Linkage Data	TBD
	4. Agriculture-Population Linkage Data	Nov 27, 2018
Geography products	5. Census Agricultural Regions Boundary File and Reference Guide	May 10, 2017
	6. Agricultural Ecumene Census Division Boundary File and Reference Guide	Sep 13, 2017
	7. Census of Agriculture Thematic Maps	Dec 13, 2017
Reference products	8. Census of Agriculture Reference Maps	May 10, 2017
Analytical products	9. Analytical series – Farm and Farm Operator Data	May 17, 2017 to Jun 21, 2017
	10. Canadian Agriculture at a Glance	Fall 2017 through Fall 2018
Services	11. Custom products and services	On demand



Post-day of release

- ❑ **Analytical products** - Insights on Canadian Society (ICS) – additional articles
- ❑ **Data products**
 - Data tables (additional plus lower-levels of geography)
 - Aboriginal Population Profile (customized profile focussing on Aboriginal content)
 - Portrait of Official Language Communities in Canada (specialized bundle of data tables focussing on language)
- ❑ **Reference products** – Technical reports (Sampling/weighting, Coverage, Aboriginal)
- ❑ 2017-18 – completion of new dissemination model (NDM) census development (software/features), additional corporate web enhancements
- ❑ 2018-2019 – census conversion and integration into NDM

Post-day-of release - Microdata files

Consultation on PUMFs

- ☐ December 2015, a usage survey questionnaire was sent to all 2011 NHS PUMF (Individuals and Hierarchical) users to gather feedback
- ☐ The survey questions related to content, variables, geography and sampling
- ☐ Requests received to increase the PUMF samples, increase number of variables, stubset details and levels of geography – all of these impact confidentiality and following consideration and assessment from Methodology ... we are not able to implement these suggestions



C E N S U S • R E C E N S E M E N T

Post-day of release - Microdata files

Public Use Microdata Files (PUMF)

- ☐ 2016 Census: Individuals PUMF File – Winter 2018/2019
- ☐ 2016 Census: Hierarchical PUMF File – Summer 2019

Research Data Centre (RDC) files

- ☐ 2016 Census Long Form Microdata File – Summer 2018

Current RDC Holdings:

- ☐ 1911 to 1951 – CCRI microdata files
- ☐ 1971 to 2006 – 100% 2B files (down to DA level)
- ☐ 2011 NHS Microdata File
- ☐ 2011 Census Microdata File (short form)





C E N S U S • R E C E N S E M E N T

Contacts

Mary-Lynne (Mini) Reid – Census Program Release Manager; Chief – Product Design, Production and Dissemination Services, mary-lynnereid@canada.ca

Paul Schwets – Head, Dissemination Services, paul.schwets@canada.ca

Glen Hohlmann – 2016 Census Program Dissemination Project Manager, Assistant Director – Dissemination, glen.hohlmann@canada.ca